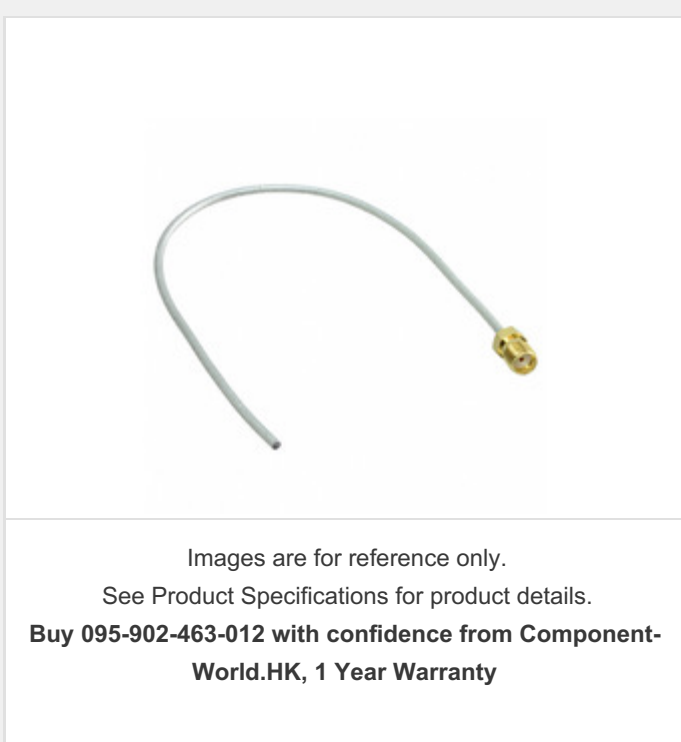


095-902-463-012



Amphenol® RF

Part Number: [095-902-463-012](#)
Manufacturer: [Amphenol Connex \(Amphenol RF\)](#)
Description: CBL ASSY SMA UT-085C 12"
Data sheet: [095-902-463-yyy Drawing](#)

RoHS Status: Lead free / RoHS Compliant
Ship From: Hong Kong
Shipment Way: DHL/Fedex/TNT/UPS/EMS

[Request For Quotation](#)

PRODUCT PARAMETER			
Part Number	095-902-463-012	Manufacturer	Amphenol Connex (Amphenol RF)
Description	CBL ASSY SMA UT-085C 12"	Lead Free Status / RoHS Status	Lead free / RoHS Compliant
Quantity Available	6614 pcs	Data sheet	095-902-463-yyy Drawing
Category	Cable Assemblies	Style	SMA to Cable
Series	-	Other Names	ARF2723
Operating Temperature	-65°C ~ 165°C	Moisture Sensitivity Level (MSL)	Not Applicable
Manufacturer Standard Lead Time	9 Weeks	Length	12.00" (304.80mm)
Lead Free Status / RoHS Status	Lead free / RoHS Compliant	Impedance	50 Ohms
Gender	Female to Cable	Frequency - Max	18GHz
Features	Shielded	Detailed Description	Cable Assembly Coaxial SMA to Cable Female to Cable UT-085C 12.00" (304.80mm)
Color	Gray	Cable Type	UT-085C
2nd Connector	Cable (Round)	1st Connector	SMA Female Jack

Component-World.com is a Reliable Stocking Distributor of Electronic Components. We specialize in all Amphenol Connex (Amphenol RF) series electronic components. We have 6614 pieces of Amphenol Connex (Amphenol RF) 095-902-463-012 in stock available now. Request a quote from electronics components distributor at Component-World.com, our sales team will contact you within 24 hours.
 RFQ Email: info@Components-World.com

RELATED PRODUCTS			
	Part#: 095-902-463-005 Description: CONN SMA JACK STR 50 OHM SOLDER	Manufacturers: Amphenol Connex (Amphenol RF)	RFQ
	Part#: 095-902-466-002 Description: CBL ASSY SMA PLUG-PLUG 36"	Manufacturers: Amphenol Connex (Amphenol RF)	RFQ
	Part#: 095-902-462-012 Description: CBL ASSY SMA MICRO COAX 12"	Manufacturers: Amphenol Connex (Amphenol RF)	RFQ
	Part#: 095-902-463-007 Description: SMA STRAIGHT JACK TO BLUNT CUT O	Manufacturers: Amphenol Connex (Amphenol RF)	RFQ
	Part#: 095-902-463-008 Description: SMA STRAIGHT JACK TO BLUNT CUT O	Manufacturers: Amphenol Connex (Amphenol RF)	RFQ
	Part#: 095-902-463-006 Description: CBL ASSY SMA UT-085C 6"	Manufacturers: Amphenol Connex (Amphenol RF)	RFQ
	Part#: 095-902-475-018 Description: CBL ASSY SMA PLUG LMR 195 18"	Manufacturers: Amphenol Connex (Amphenol RF)	RFQ
	Part#: 095-902-475-024 Description: CBL ASSY SMA PLUG LMR 195 24"	Manufacturers: Amphenol Connex (Amphenol RF)	RFQ
	Part#: 095-902-475-036 Description: CBL ASSY SMA PLUG LMR 195 36"	Manufacturers: Amphenol Connex (Amphenol RF)	RFQ
	Part#: 095-902-463-003 Description: CONN SMA JACK STR 50 OHM SOLDER	Manufacturers: Amphenol Connex (Amphenol RF)	RFQ
	Part#: 095-902-475-006 Description: CBL ASSY SMA PLUG LMR 195 6"	Manufacturers: Amphenol Connex (Amphenol RF)	RFQ
	Part#: 095-902-466-003 Description: CBL ASSY SMA PLUG-PLUG 4'	Manufacturers: Amphenol Connex (Amphenol RF)	RFQ
	Part#: 095-902-466-005 Description: CBL ASSY SMA PLUG-PLUG 3.3'	Manufacturers: Amphenol Connex (Amphenol RF)	RFQ
	Part#: 095-902-463-009 Description: CBL ASSY SMA UT-085C 9"	Manufacturers: Amphenol Connex (Amphenol RF)	RFQ
	Part#: 095-902-463-004 Description: CONN SMA JACK STR 50 OHM SOLDER	Manufacturers: Amphenol Connex (Amphenol RF)	RFQ
	Part#: 095-902-466-001 Description: CBL ASSY SMA PLUG-PLUG 24"	Manufacturers: Amphenol Connex (Amphenol RF)	RFQ
	Part#: 095-902-463-010 Description: SMA STRAIGHT JACK TO BLUNT CUT O	Manufacturers: Amphenol Connex (Amphenol RF)	RFQ
	Part#: 095-902-466-004 Description: CBL ASSY SMA PLUG-PLUG 6'	Manufacturers: Amphenol Connex (Amphenol RF)	RFQ
	Part#: 095-902-475-012 Description: CBL ASSY SMA PLUG LMR 195 12"	Manufacturers: Amphenol Connex (Amphenol RF)	RFQ
	Part#: 095-902-463-011 Description: SMA STRAIGHT JACK TO BLUNT CUT O	Manufacturers: Amphenol Connex (Amphenol RF)	RFQ

Related keywords for **095-902-463-012**

Amphenol Connex (Amphenol RF) 095-902-463-012	095-902-463-012 distributor	095-902-463-012 supplier	095-902-463-012 price
095-902-463-012 download datasheet	095-902-463-012 datasheet	095-902-463-012 stock	buy 095-902-463-012
Amphenol Connex (Amphenol RF) 095-902-463-012	Amphenol Connex 095-902-463-012	Amphenol Connex (Amphenol RF) 095-902-463-012	Amphenol RF Division 095-902-463-012
Amphenol RF 095-902-463-012	Connex (Amphenol RF) 095-902-463-012		